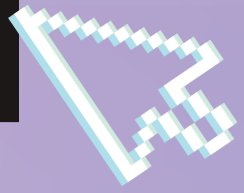


# KCSiE, CYBER AND ME



The education sector is particularly vulnerable to cyber attacks but did you know the majority of those attacks are likely to be from students?

It is important to report concerns to your designated safeguarding leads at the earliest indication of cyber offending.



 **KCSiE 2023 (part 1)**

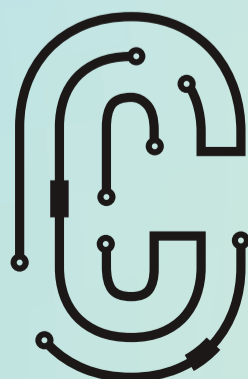
Read more by visiting our website, sending a message to our inbox or following our social media accounts.



**[www.cyberchoices.uk](http://www.cyberchoices.uk)**



**[r/CyberChoices](https://www.reddit.com/r/CyberChoices)**



**CYBER  
CHOICES**